

Moving Citizens and Deterring Criminals

G. Canavire-Bacarreza, J.C. Duque, J. Urrego

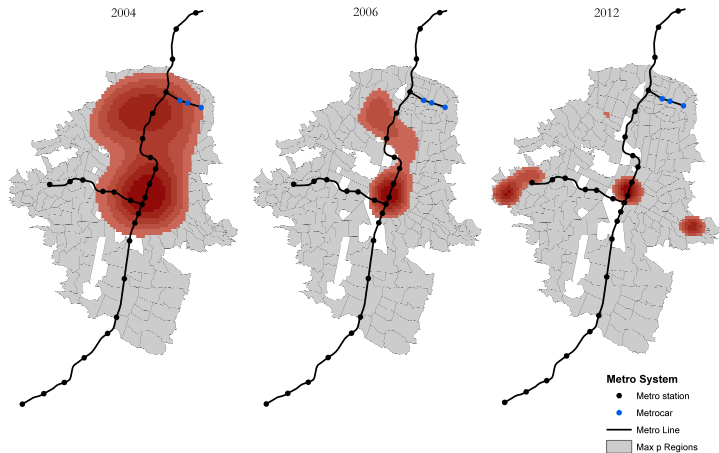
Discussion by Anne Brockmeyer (WB)

IEN Meeting 2017

Important Research Question

- **Does transport infrastructure reduce crime?**
 - More generally, does market integration reduce crime?
 - Answer: Yes.
- **Which mechanisms are at play?**
 - Socio-economic mechanism: access to labor market
 - Deterrence mechanism: police presence

Non-Parametric Evidence



Parallel Trends?

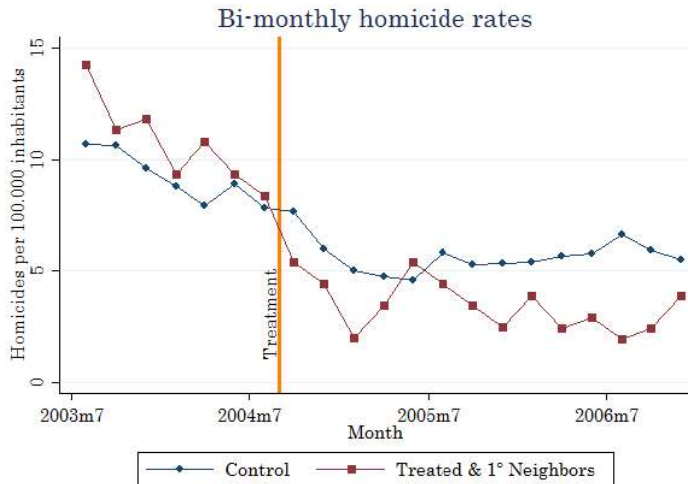
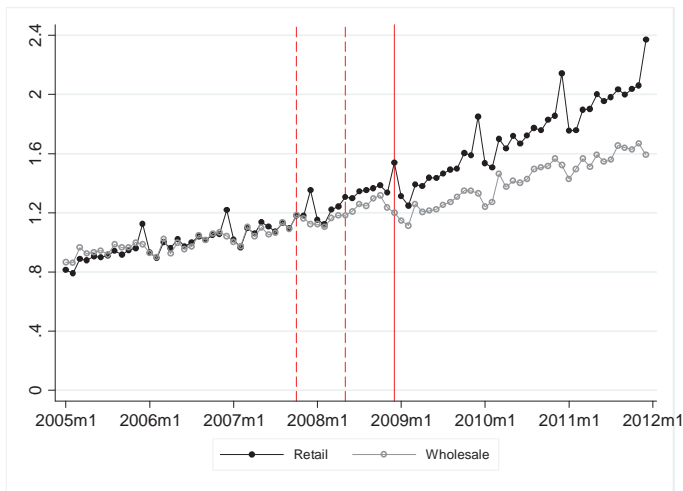


Illustration: Naritomi (2016)

a. Raw data: reported revenue changes



- Limit control group to high-crime zone
- Interact treatment with baseline crime levels
- Additional placebos
 - In main body of paper
- Spillovers to travel destinations rather than neighbors
 - Structural general equilibrium model

Decomposition is complex and requires assumptions

- Unclear if treatment should affect crime through labor market or vice-versa, or both through a third mediator
- Better to show direct effect of treatment on intermediate outcomes
- Challenge: can't test identifying assumption
- Labor market: can you observe people commuting for work?

- **Clarify empirical methods**

- Identifying assumption, potential challenges, tests
- Matching: details on predators
- Displacement: composition of migration different in T and C?
- $\ln(\text{homicides})$ - neighborhood-months with 0 homicides?

- **Shorten literature review**

- Especially re Cerda et al (2012)

- **Avoid colloquial expressions**

- “a bunch of”, “pretty much”